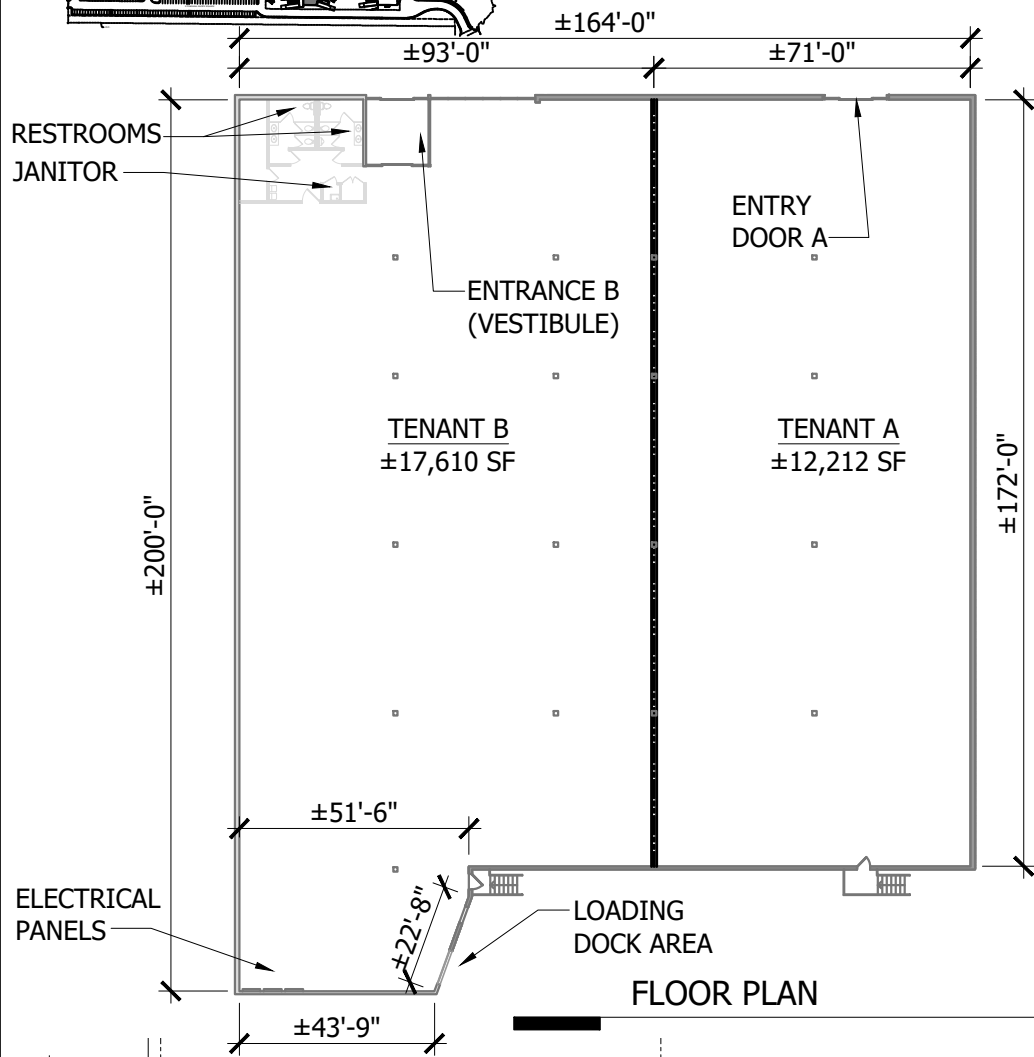


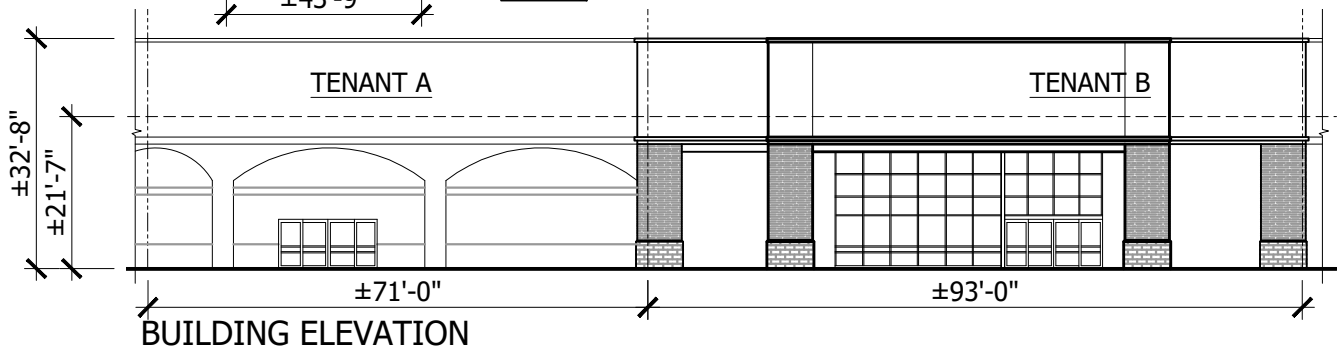
UTILITY INFO:

- GAS - 2" LINE
- WATER - 2" LINE
- HVAC - TENANT A
 - RTU #2- 20 TON (2008)
 - RTU #3- 20 TON (2008)
- HVAC - TENANT B
 - RTU #1- 17.5 TON (2008)
 - RTU #4- 25 TON (2008)
 - RTU #5- 20 TON (2008)
 - RTU #6- 5 TON (2008)
- ELECT - 800 AMP, 277/480V
- SANITARY - 6"



CLEAR HEIGHT: ±21'-7"

TENANT A + TENANT B
±29,822 SF



8170 STONEWALL
SHOPS SQUARE,
GAINESVILLE, VA
20155

THE SHOPS AT STONEWALL
SUITE #405
DATE 05.19.2023



Peterson Companies
12500 Fair Lakes Circle
Suite 400, Fairfax
VA 22033

This LOD is for general illustrative purposes only and is not intended to show the precise leasing lines of any premises, nor the exact configuration, number, location or size of any improvements, buildings or common areas, all of which may vary from time to time subject to the limitations set forth in the Lease, if any. Any references to specific tenants or square footages on this LOD shall not constitute any representation or warranty by Landlord as to the actual tenants or square footages or as to any future tenants or square footages. Tenant shall field measure and confirm all utilities.